

THE GAMES OF ANIME

What? I Can Play That?!

Who Are These People?

Samaru and rajamitsu ARE Sanddiver Studios!

Samaru does cosplay! (Check out our cosplay panels tomorrow!)

raj does art! (Ask her about her webcomic!)

Both have a bit of a gaming problem. Seriously. Ten years of GenCon will do that to a person.



What Kind of Games Are We Talkin'?

- We WILL be discussing traditional board/card/tile games sometimes seen or referred to in anime
- We will NOT be discussing:
 - Sports
 - Trading Card Games
 - Games unique to a series
 - (Not that we don't like these! Just not our focus for this panel.)

Hanafuda



Hanafuda Fun Fact!

A well-known company got their start way back in 1889 manufacturing Hanafuda cards. That company?



Hanafuda Cards



- Hanafuda cards are used to play several different matching games
- A deck of card is made up of 12 months with four cards to each month

Koi Koi



- Koi Koi is one of many games that can be played using Hanafuda Cards.
- Hanafuda cards are made up of 12 months with four cards to each month.
- Players try to match cards within months to form scoring combinations.

Koi Koi



- After making a set, player can take points or declare Koi Koi and try for additional points
- However, if another player makes a set that player scores double!

Koi Koi Combinations



- These are some of the combinations. Usually combinations are made up of the higher point value cards.
- Different combinations may be used depending on the group playing

As Seen In...

- Summer Wars
- Yakuza (video game – playable!)



Referenced In...

Dragon Ball

- InoShikaCho
 - Based on the Boar/Deer/Butterfly combo



Naruto

- Team 10 (Ino, Shikamaru, and Choji)
 - ...ditto.



Karuta



Karuta - Many Types

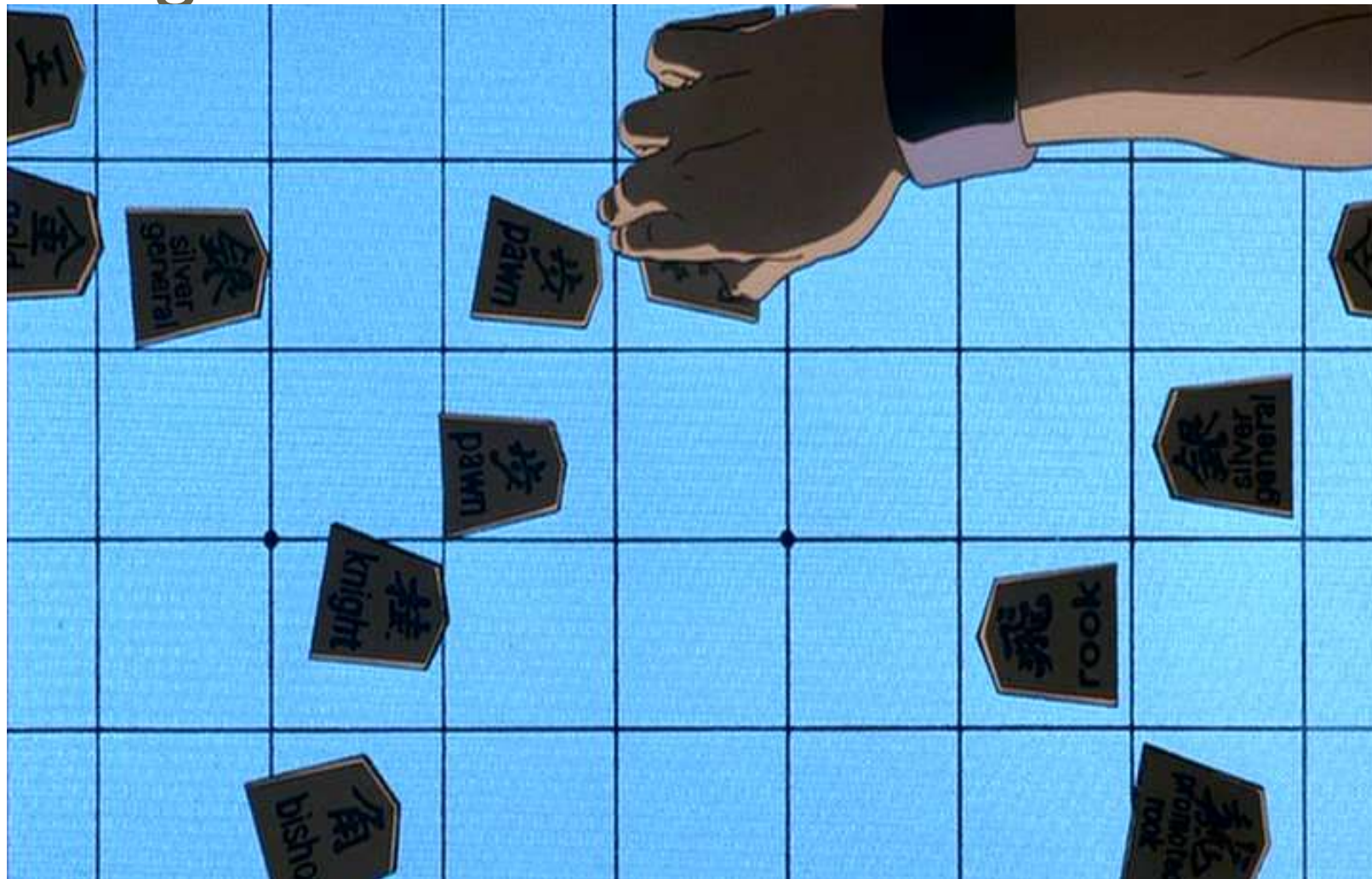
- Many variations. Played competitively, but also popular with families at New Year's.
- Most popular: Hyakunin-Isshu
 - Meaning: "100 People, 1 Poem"
 - Two sets of 100 cards:
 - Reading Cards (Yomi-fuda)
 - Complete poem, name and portrait of poet
 - Playing Cards (Tori-fuda)
 - Second half of a poem
 - The Tori-fuda are placed face-up on the floor. A non-playing reciter randomly selects one Yomi-fuda and reads it. During this, players try to find the correct matching Tori-fuda first.

As Seen in...

- Chihayafuru
- Descendants of Darkness
 - (manga ver. only)
- Kirby Super Star Ultra
 - (game – called “Kirby Card Swipe)
- World Trigger
- Bleach



Shogi



Shogi (Japanese Chess)



- Shogi is similar to Western Chess with a few differences.
- Some pieces move the same as in Chess but most move differently
- Captured pieces can be returned to play on the side of the capturing player
- Some pieces are upgraded upon reaching the opposite side of the board

Shogi Pieces

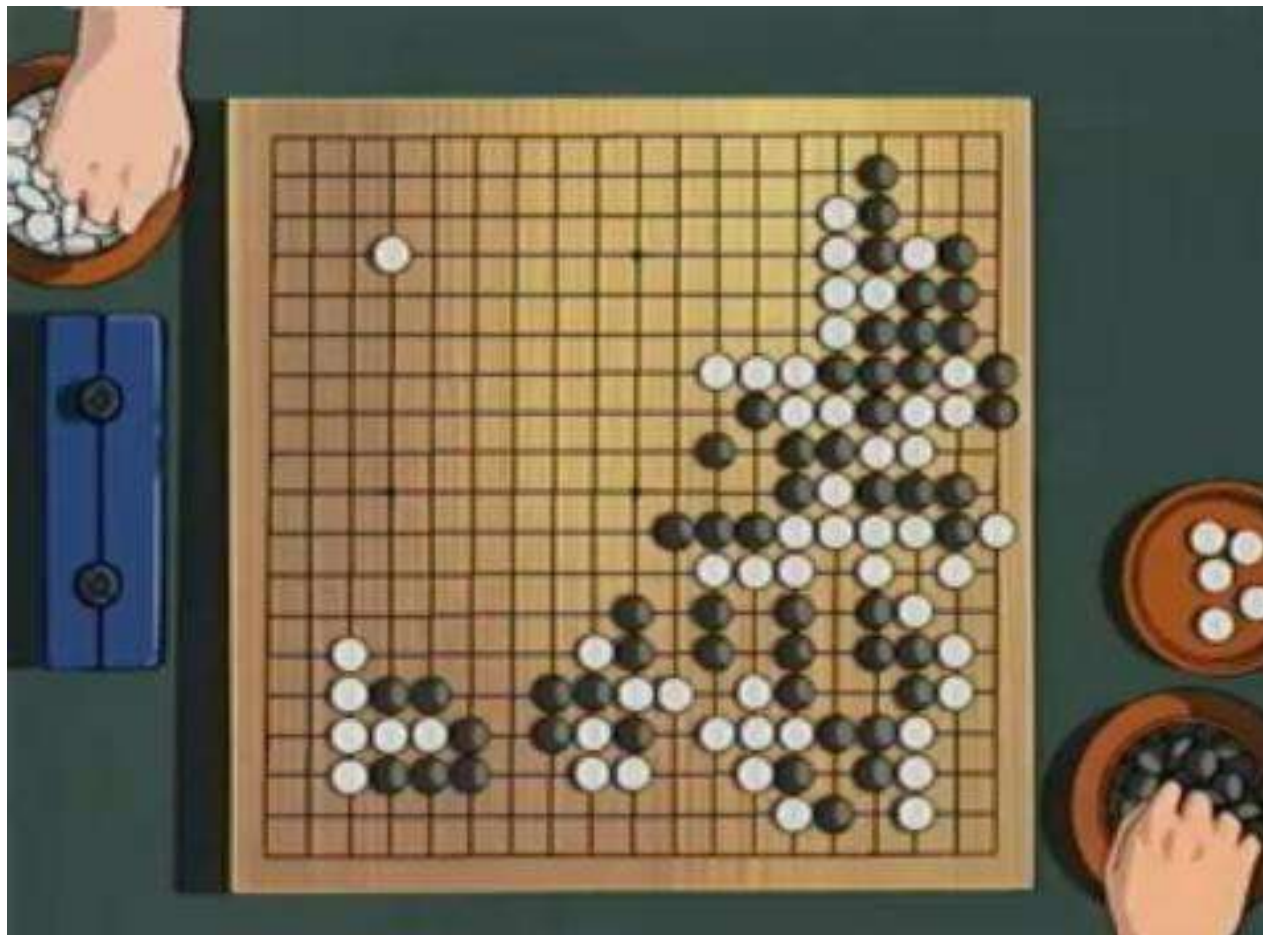
Reigning King (<i>osho</i> —royal general)					
Challenging King (<i>gyokusho</i> —jeweled general)					
Bishop (<i>kakugyo</i> —angle mover)			Horse (<i>ryuma</i> —swift horse)		
Rook (<i>hisha</i> —flying chariot)			Dragon (<i>Ryuo</i> —dragon king)		
Gold General (<i>kinsho</i>)					
Silver General (<i>ginsho</i>)			Promoted Silver (<i>narigin</i>)		
Knight (<i>keima</i> —cassia horse)			Promoted Knight (<i>narikei</i> —promoted cassia)		
Lance (<i>kyosha</i> —incense chariot)			Promoted Lance (<i>narikyo</i> —promoted incense)		
Pawn (<i>fuhyo</i> —foot soldier)			Promoted Pawn (<i>tokin</i> —reaches gold)		

As Seen In...

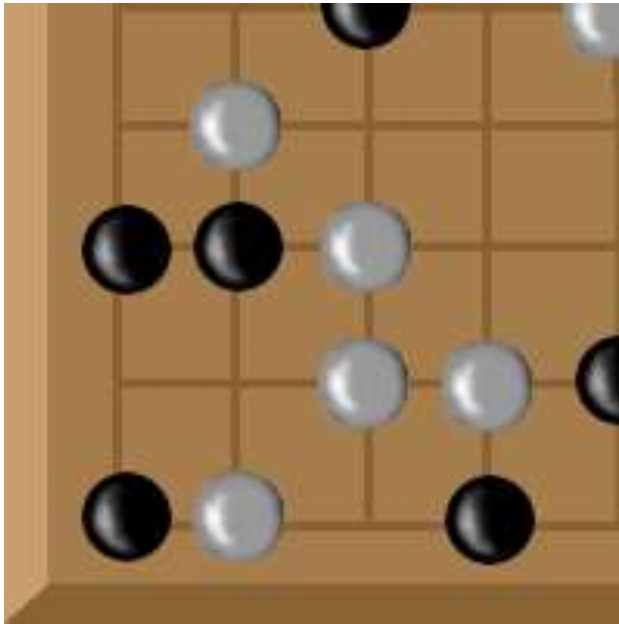
- Cowboy Bebop
- Shion no O
- Ruroni Kenshin
- .Hack//SIGN
- March Comes in Like a Lion
- Naruto



Go



Go



- Go is an easy to learn game which involves a large amount of strategy
- The object is to surround your opponents stones such that they have no valid moves
- Captured stones are counted towards the players final score

As Seen In...

- Hikaru no Go



Mahjong



Mahjong

- Mahjong is well known to most people as a tile-matching solitaire game. However it was originally a four player table game
- There are many different types of Mahjong rules and sets: Hong Kong, Japanese, American...

Mahjong Tiles



- Mahjong is made up of three suits of tiles plus the honor tiles (dragons, winds, seasons, flowers, etc)

Mahjong Play

- The object of Mahjong is to form a hand of sets (kan/kong, pon/pung) and runs (chi/chow)
- A set is made up of three or four cards of the same value from the same suit
- A run is made up of three ordered cards in a suit

Mahjong Scoring

- Mahjong hands are assigned a point value based on the makeup of the hand
- Groups that are harder to get are worth more points
- There are 20-60 different scoring groups depending on the game played

Japanese Mahjong (Riichi)

- Play is similar to Chinese rules
- Players can declare themselves ready (Riichi)
- Cannot go out without a minimum number of points in hand

As Seen In...

- Saki
- Akagi
- Sayuki Reload
- xxxHolic
- Legendary Gambler Tetsuya
- Mudazumo Naki Kaikaku (The Legend of Koizumi)
- ...and many, many more



Referenced In...

- BlazBlue
 - Some of Litchi's moves are named after Mahjong plays
- Saiyuki
 - Chin Yisou uses Mahjong tiles to make shikigami



Useful Books

- Hanafuda: The Flower Card Game-Japan Publications
 - Covers a variety of games played using Hanafuda cards
- The Book of Mahjong-Amy Lo
 - Covers Chinese and Taiwanese Mahjong Variations
- A Mahjong Handbook-Eleanor Whitney
 - Covers rules and strategy for Riichi Mahjong

Questions?